

p90 RSK1 Antibody
Catalog # ASM10400**Specification**

p90 RSK1 Antibody - Product Information

Application	WB, IP, ICC
Primary Accession	Q15418
Other Accession	NP_002944.2
Host	Rabbit
Reactivity	Human, Mouse, Rat, Bovine
Clonality	Polyclonal
Description	
Rabbit Anti-Human p90 RSK1 Polyclonal	

Target/Specificity
Detects ~90kDa.**Other Names**

RSK1 p90 Antibody, HU1 Antibody, MAPKAP Antibody, p90rsk Antibody, p90S6K Antibody, RSK1 Antibody, RSK 1 p90 Antibody

Immunogen

Human p90 RSK1 C-terminal peptide, conjugated to KLH

Purification

Protein A Purified

Storage **-20°C**

Storage Buffer

TBS, 50% glycerol, 0.09% sodium azide

Shipping Temperature

Blue Ice or 4°C

Certificate of Analysis

0.25 mg/ml was sufficient for detection of SPC-147 in lysates prepared from mouse brain, spleen and intestine.

Cellular Localization

Cytoplasm | Nucleus

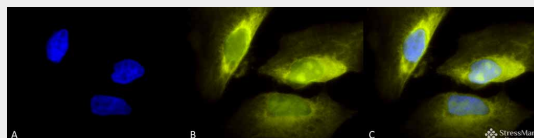
p90 RSK1 Antibody - Protocols

Provided below are standard protocols that you may find useful for product applications.

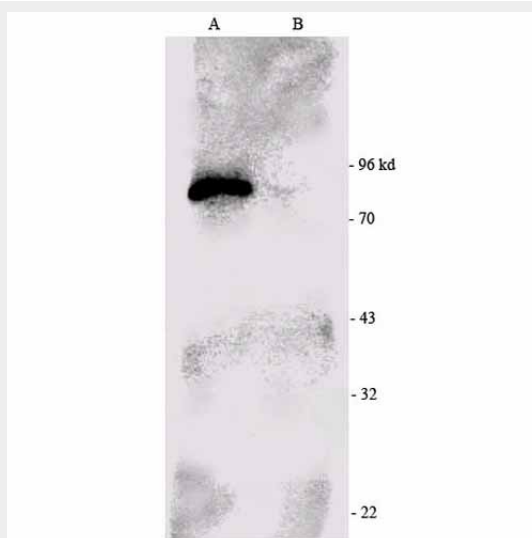
- [Western Blot](#)
- [Blocking Peptides](#)
- [Dot Blot](#)
- [Immunohistochemistry](#)
- [Immunofluorescence](#)
- [Immunoprecipitation](#)

- [Flow Cytometry](#)
- [Cell Culture](#)

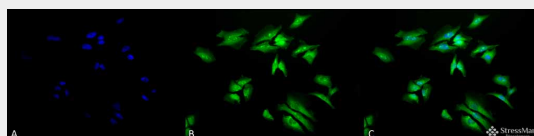
p90 RSK1 Antibody - Images



Immunocytochemistry/Immunofluorescence analysis using Rabbit Anti-p90 RSK1 Polyclonal Antibody (ASM10400). Tissue: Heat Shocked HeLa Cells. Species: Human. Fixation: 2% Formaldehyde for 20 min at RT. Primary Antibody: Rabbit Anti-p90 RSK1 Polyclonal Antibody (ASM10400) at 1:50 for 12 hours at 4°C. Secondary Antibody: R-PE Goat Anti-Rabbit (yellow) at 1:200 for 2 hours at RT. Counterstain: DAPI (blue) nuclear stain at 1:40000 for 2 hours at RT. Localization: Nucleus. Cytoplasm. Magnification: 100x. (A) DAPI (blue) nuclear stain. (B) Anti-p90 RSK1 Antibody. (C) Composite. Heat Shocked at 42°C for 30 min.



Western blot analysis of Mouse brain cell lysates showing detection of RSK1 protein using Rabbit Anti-RSK1 Polyclonal Antibody (ASM10400). Primary Antibody: Rabbit Anti-RSK1 Polyclonal Antibody (ASM10400) at 1:1000. p90 RSK1 immuno-precipitated from the mouse brain extract (left) and immuno-precipitated negative control (right).



Immunocytochemistry/Immunofluorescence analysis using Rabbit Anti-p90 RSK1 Polyclonal Antibody (ASM10400). Tissue: Heat Shocked HeLa Cells. Species: Human. Fixation: 2% Formaldehyde for 20 min at RT. Primary Antibody: Rabbit Anti-p90 RSK1 Polyclonal Antibody (ASM10400) at 1:50 for 12 hours at 4°C. Secondary Antibody: FITC Goat Anti-Rabbit (green) at 1:200 for 2 hours at RT. Counterstain: DAPI (blue) nuclear stain at 1:40000 for 2 hours at RT. Localization: Nucleus. Cytoplasm. Magnification: 20x. (A) DAPI (blue) nuclear stain. (B) Anti-p90 RSK1 Antibody. (C) Composite. Heat Shocked at 42°C for 30 min.

p90 RSK1 Antibody - Background

The p90 ribosomal S6 kinase (Rsk) family comprises four mammalian serine/threonine kinases

(Rsk1-4). In the past, S6K1 and S6K2 were thought to be the predominant operating S6 kinases, however RSK 1 and 2 have been shown to phosphorylate S6 in response to the ERK pathway, or otherwise known as the extra cellular signal-regulated kinases pathway. RSK 1 in particular is very multifunctional as it participates in nuclear signaling, regulates nuclear factors, regulates several transcription factors like c-Fos, and interacts with the transcriptional coactivator CREB-binding protein. As a result, RSK1 seems to have an important role in cellular growth control and proliferation. (1-5).

p90 RSK1 Antibody - References

1. Roux, P. (2007). UCSD-Nature Molecule Pages.
2. Frodin, M. and Gammeltoft, S. (1999) Mol. Cell. Endocrinol. 151: 65-77.
3. Merienne, K. et al. (1998) J. Med. Genet. 35: 890-894.
4. De Cesare, D. et al. (1998) Proc. Natl. Acad. Sci. 95: 12202-12207.
5. Joel, P. B. et al. (1998) Mol. Cell. Biol. 18: 1978-1984.